

201-388 PIPELINE RD
\$429,900 INC. GST

**Amber
Grove**
CONDOMINIUMS

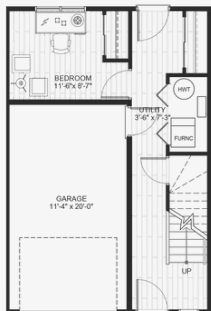


THE ASPEN

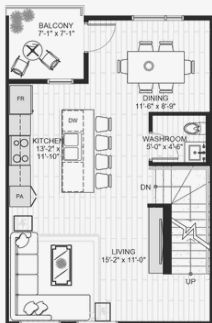
- 4 Bedrooms
- 2.5 Bathrooms
- Attached Garage

FEATURES

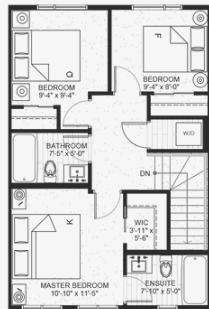
- 4 Piece Black Stainless Steel Appliances
- Custom Cabinets
- Quartz Countertops
- Air Conditioning
- Open concept Main Floor



MAIN FLOOR



SECOND FLOOR



THIRD FLOOR

ANITA SHARMA TURNER

RE/MAX Associates
204-989-9000
anita@anitasharmaturner.com

STREETSIDE
DEVELOPMENTS

A QUALICO® Company