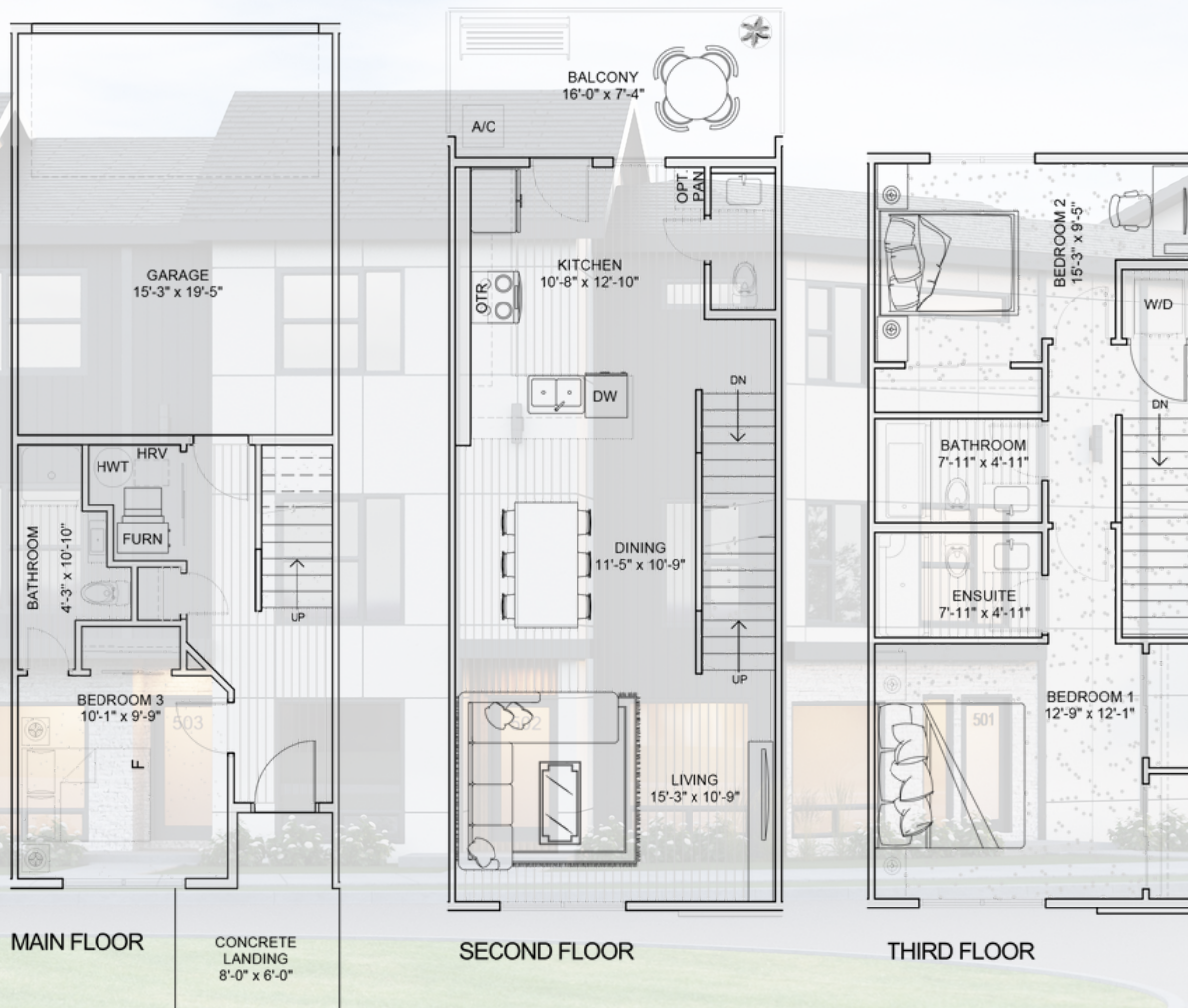


# The Amber II

🏠 1,485 SF    🛏 3 Bed    🚿 3.5 bathroom



## DETAILS:

- Main floor Entrance offers a Work/Live Area with full bathroom and attached garage
- Open concept kitchen, living & dining space with half bathroom on the 2nd floor
- Primary and second bedroom with ensuite & walk-in-closet on 3rd floor
- 3rd Floor laundry for added convenience
- Concrete Landing on the main floor with private balcony on the 2nd floor
- 1 - 2 - 5 - 10 New Home Warranty