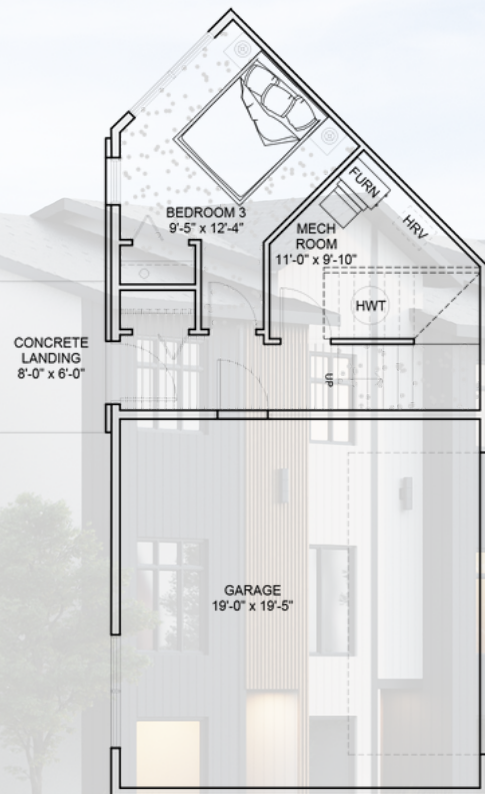
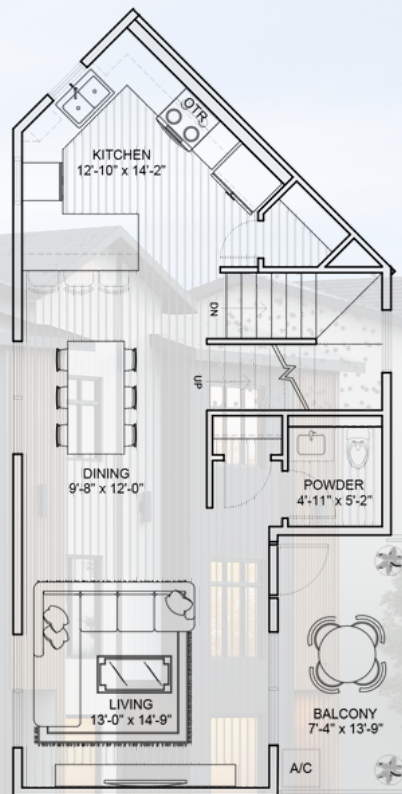


The Sapphire

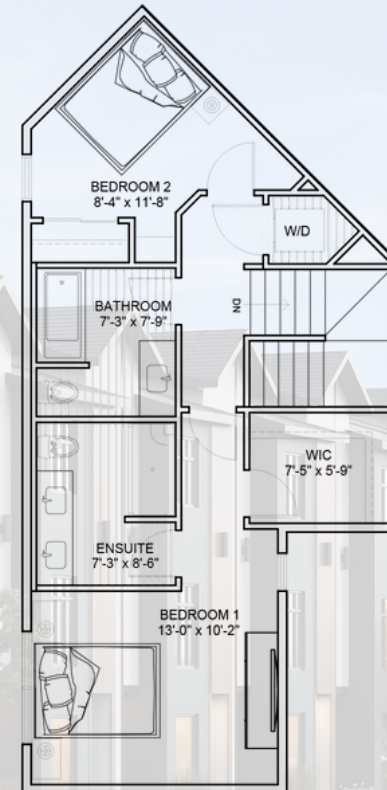
🏠 1597 SF 🛏 3 Bed 🚿 2.5 Baths



MAIN FLOOR



SECOND FLOOR



THIRD FLOOR

- Main floor Entrance offers a Work/Live Area with Attached Garage
- Open concept kitchen, living & dining space on the 2nd floor
- Primary and Second Bedroom with Ensuite & Walk-in-closet on 3rd floor

- 3rd Floor Laundry for added convenience
- Concrete Landing on the Main Floor with Private Balcony on the 2nd floor
- 1 - 2 - 5 - 10 New Home Warranty

StreetSide

A QUALICO Company

The Developer reserves the right to change plans, specifications, features, materials, and dimensions without notice in its sole discretion. All renderings, colour schemes, floor plans, maps and displays are artists' conceptions and for illustration purposes only. See sales representative for full details. E&OE.