



A QUALICO® Company

Couture

S O U T H

STYLISH TOWNHOMES IN RIDGEWOOD WEST, DESIGNED FOR EFFORTLESS LIVING.



COUTURE SOUTH

by StreetSide



Introducing Couture South Condominiums by StreetSide Developments, A Qualico Company, where you can experience a unique sense of style & comfort.

Couture South offers modern, two-storey, 3 bedroom townhomes with a spacious double detached garage, and stunning interior finishes.

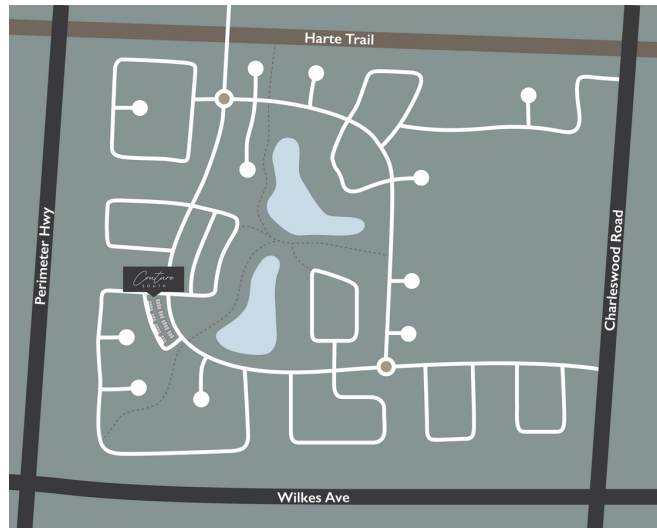
Live in Ridgewood West, a new community located within Charleswood in Winnipeg, surrounded by beautiful landscape of wetlands, native grasses and trails

RidgeWood West

A BEAUTIFUL NEW COMMUNITY BUILT BY QUALICO.

RidgeWood West is a new community located within Charleswood in west Winnipeg. This community will offer a diverse range of home styles in a beautiful landscape of wetlands, native grasses, and trails.

RidgeWood West offers families the opportunity to move into a new community on the City's edge, and the chance for Charleswood residents to have a new home in an area they already know and love. It's a scenic setting of wetland vistas, graceful grasses, and extensive walking trails. RidgeWood West is ideal for those who feel most at home close to nature, yet still enjoy having all the conveniences of city life just a stone's throw away.



Sitemap

📍 COUTURE CRESCENT

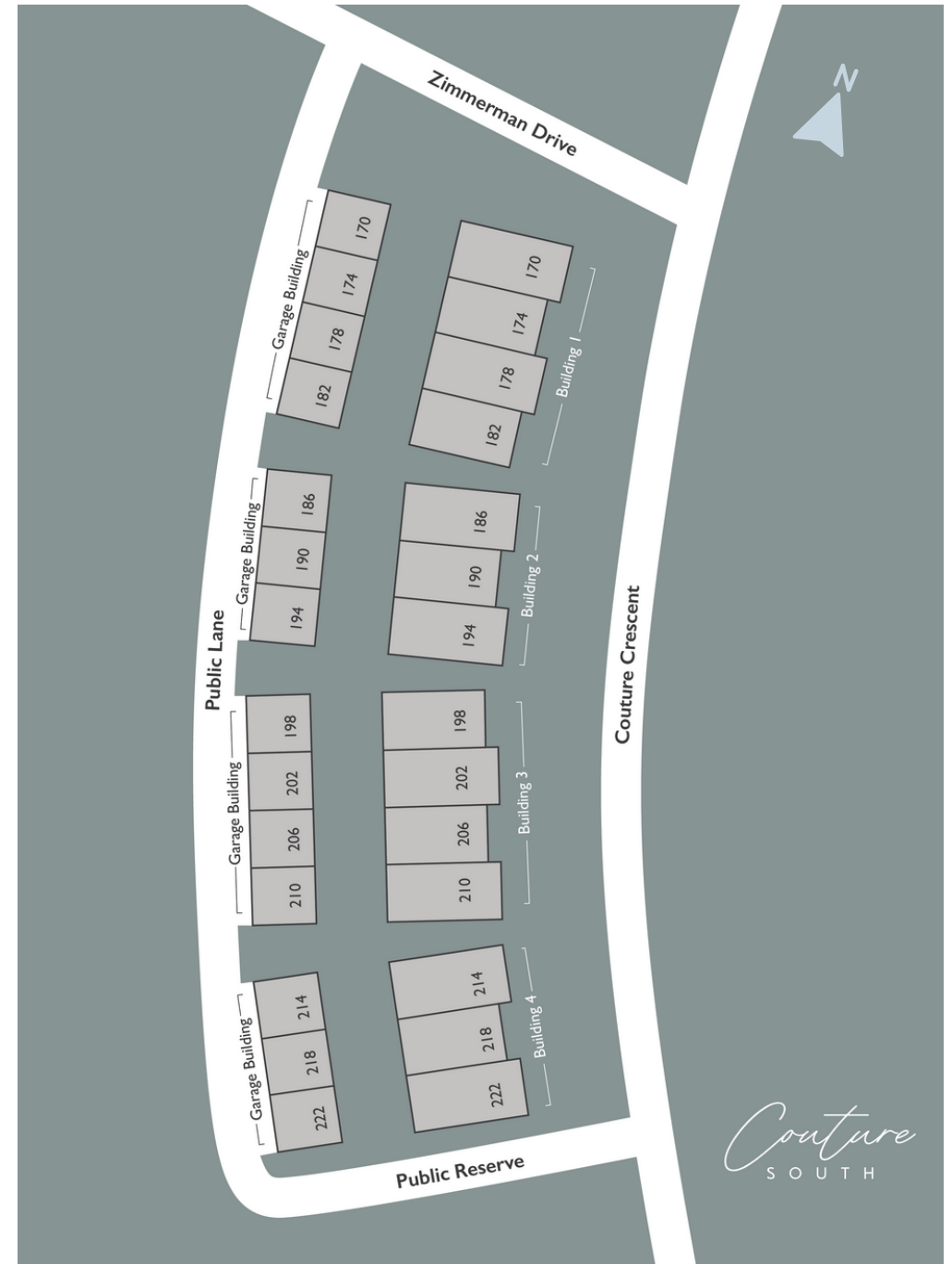
Couture South Condominiums located in the new community of RidgeWood consists of 2 Four-plex's & 2 Three-plex's for a total of 14 new homes. Total Units Available For Sale:

The Oscar (1152 SF; total of 6)

The Louis (1296 SF; total of 8)

DEVELOPMENT FEATURES

- Open concept main floor with galley-style kitchen and large island with quartz counters.
- Large windows allowing plenty of natural light into your home.
- Landscaped front & back yards with optional privacy fence & wood deck add-ons.
- Unfinished lower level with finishing option through developer.
- Double detached garage.
- Pet-friendly community.



Floorplans

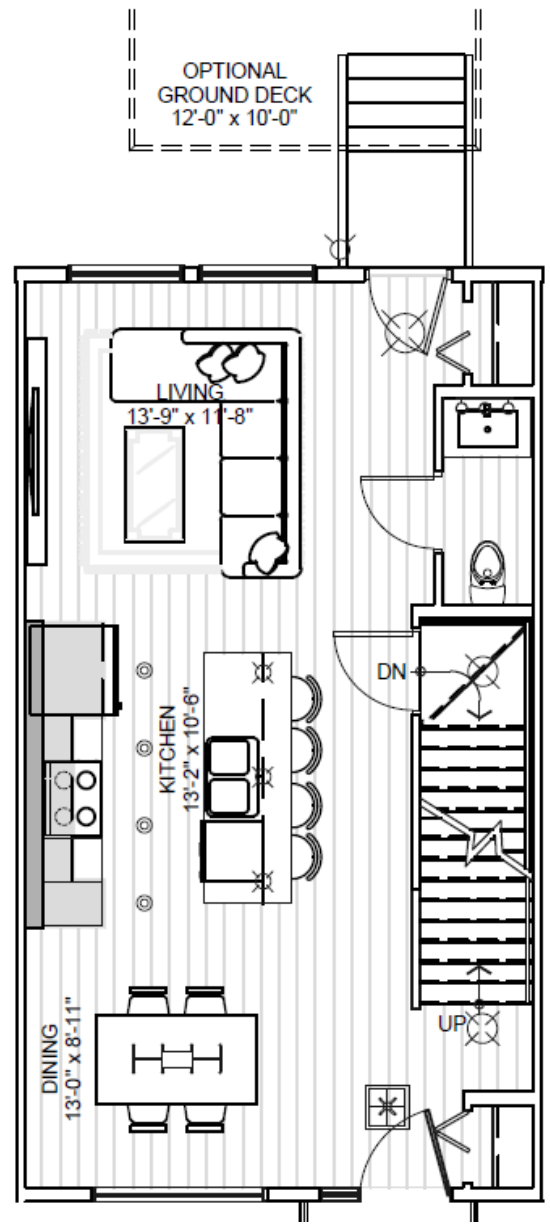


THE OSCAR & THE LOUIS

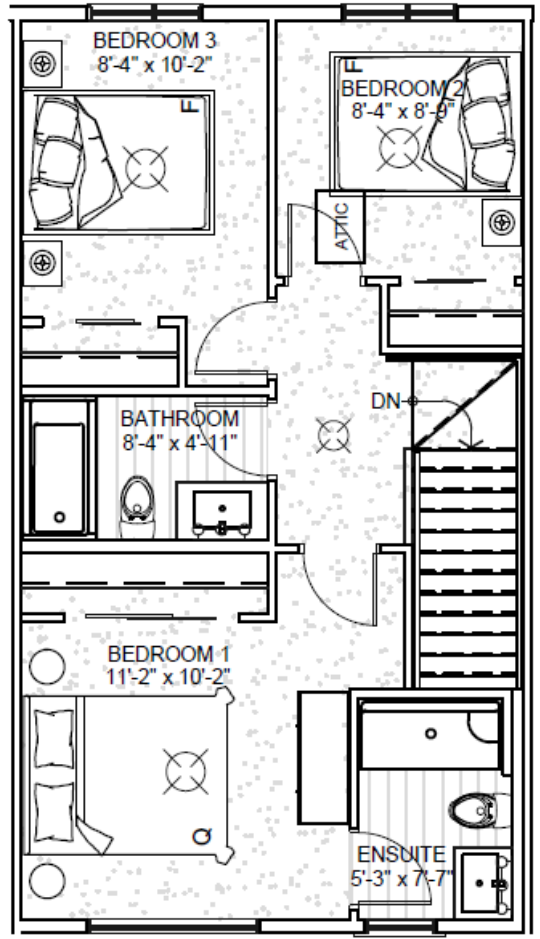
There are two different floorplan options to choose from at Couture South Condominiums, The Oscar and The Louis, both offering spacious, 3 bedrooms and 2.5 bathrooms designs.

THE Oscar

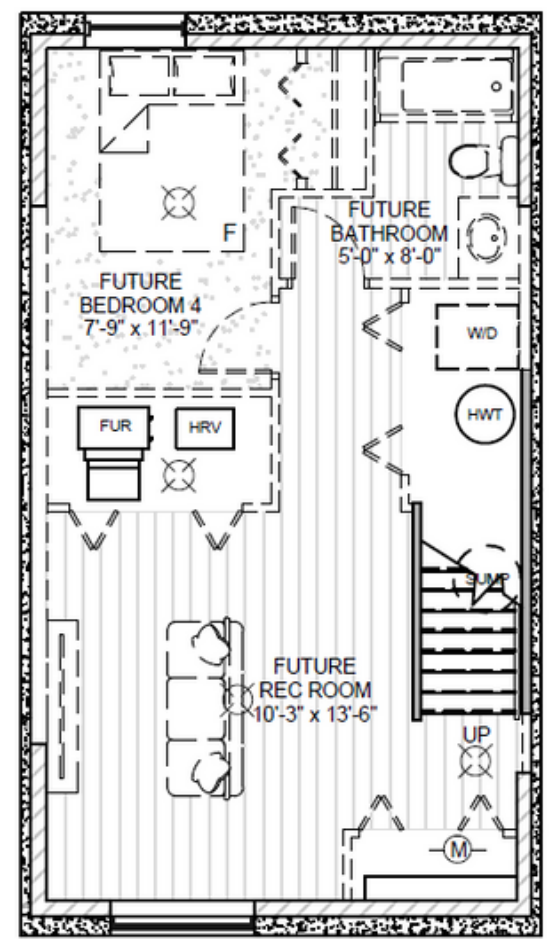
3 Bedrooms
2.5 Bathrooms
1152 sqft.



MAIN FLOOR



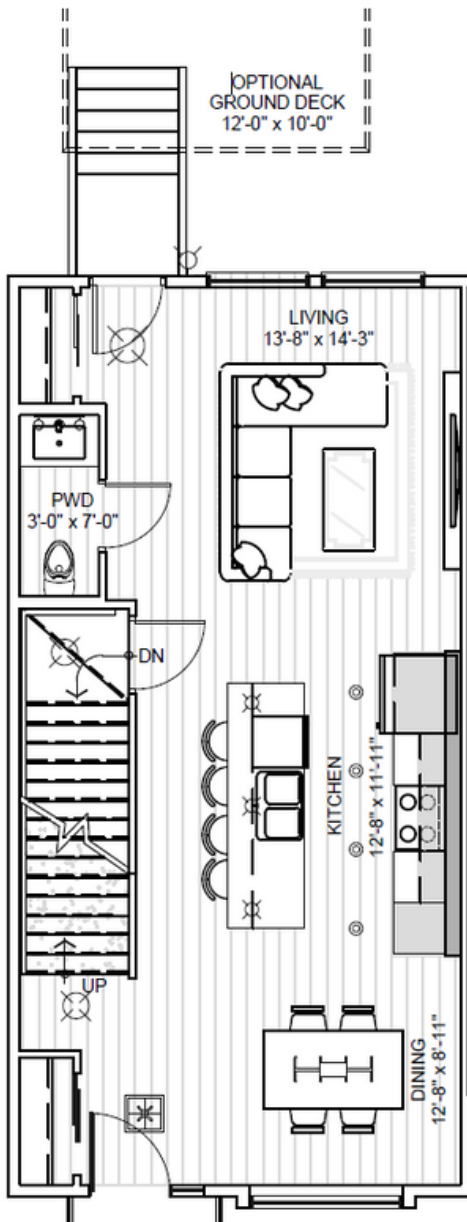
SECOND FLOOR



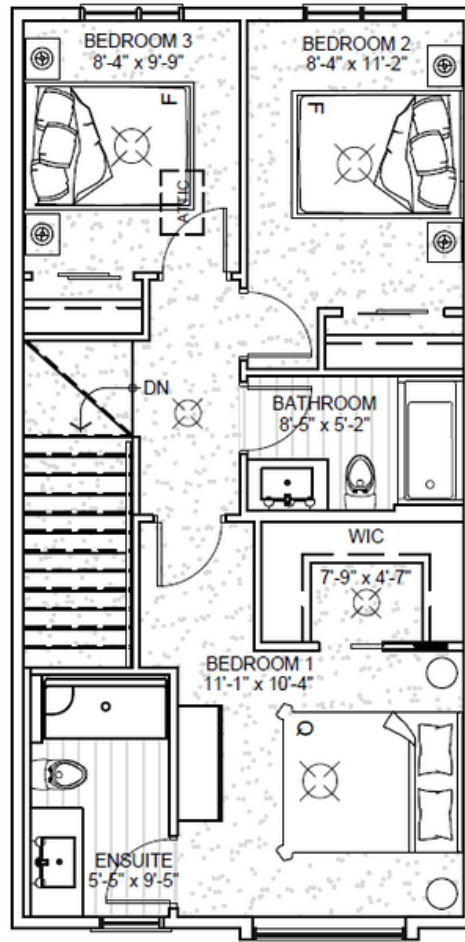
LOWER LEVEL OPTIONAL DEVELOPMENT

THE *Louis*

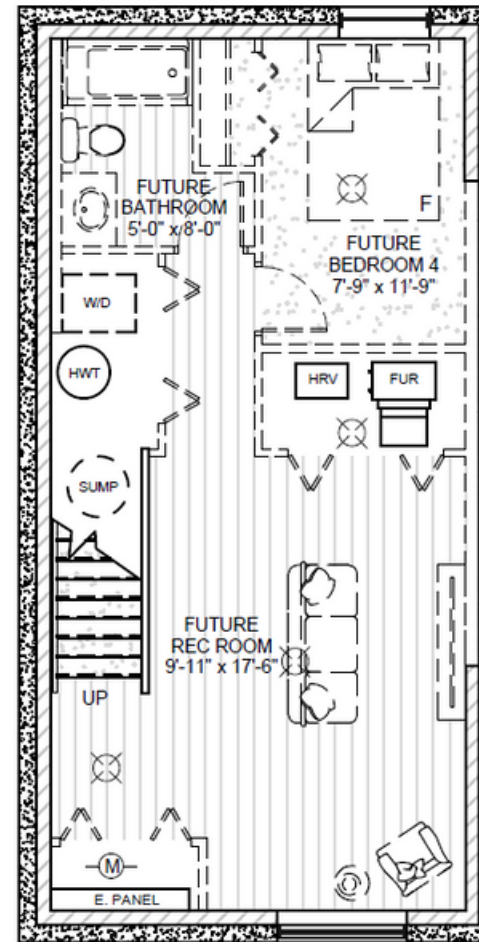
3 Bedrooms
2.5 Bathrooms
1296 sqft.



MAIN FLOOR



SECOND FLOOR



LOWER LEVEL OPTIONAL DEVELOPMENT



interiors and finishes

Couture South's townhomes feature interiors that showcase StreetSide's quality construction with glistening quartz counter tops, luxury vinyl plank flooring and two-coat paint finish included as standard. Our professional and experienced design team has carefully curated 3 Design Packages to choose from.

DESIGN *finishes*

Couture
SOUTH

SELECTION ONE



Cabinets: Kitchen Craft Coventry Thermofoil in 'Satin Cosmo'
Island: Kitchen Craft Coventry Thermofoil in 'Satin Cosmo'



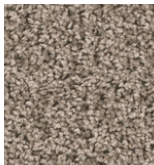
Kitchen Countertops: Granite Mountain, Timeless Series in 'Champagne Mist'



Backsplash: Ceratec Nektar Series | 2" X 2" in 'Matt White'



Kitchen Hardware: Contemporary Metal Pull in 'Matte Black'



Carpet: Shaw - Shake it up in 'Forever Pewter'



Vinyl Plank: Toryls Luxury Vinyl Plank Rigidwood Firm Premier in 'Canopy'



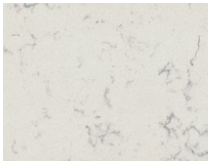
DESIGN *finishes*

Couture
SOUTH

SELECTION TWO



Cabinets: Kitchen Craft Coventry Thermofoil in 'Satin Daybreak'
Island: Kitchen Craft Coventry Thermofoil in 'Satin Daybreak'



Kitchen Countertops: Granite Mountain, Timeless Series in 'Carrara'



Backsplash: Euro Tile Country Series | 2" X 8" in 'Glossy Graphite'



Kitchen Hardware: Contemporary Metal Pull in 'Matte Black'



Carpet: Shaw - Shake it up in 'Hammerhead'



Vinyl Plank: Toryls Luxury Vinyl Plank Rigidwood Firm Premier in 'Skyline'



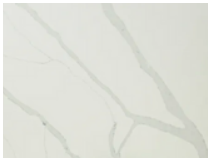
DESIGN *finishes*

Couture
SOUTH

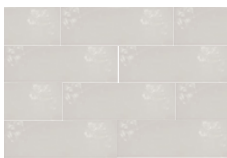
SELECTION THREE



Cabinets: Kitchen Craft Coventry Thermofoil in 'Satin White'
Island: Kitchen Craft Coventry Thermofoil in 'Satin Starless'



Kitchen Countertops: Granite Mountain, Timeless Series in 'Vesper'



Backsplash: Euro Tile Country Series | 2" X 8" in 'Glossy Gris Claro'



Kitchen Hardware: Contemporary Metal Pull in 'Matte Black'



Carpet: Shaw - Shake it up in 'Ornamental Gate'



Vinyl Plank: Toryls Luxury Vinyl Plank Rigidwood Firm Premier in 'Dakota'



LIGHTING *collection*

Couture
SOUTH



DINING ROOM



BATHROOM VANITY



KITCHEN ISLAND 4"



BEDROOMS & HALLWAY



LAUNDRY



MAIN LEVEL FOYER



PRIMARY BEDROOM



EXTERIOR

Specifications

Couture
SOUTH

KITCHEN FEATURES

- Custom designed soft-close Kitchen Craft cabinetry
- Quartz counter tops in decorative colors
- Double basin under mount stainless steel sink
- Deluxe single-lever, black finish pulldown faucet

BATHROOMS

- Contempra Melamine vanity cabinets
- Quartz countertop in decorative colors
- White, low water consumption flush toilets w/lined tanks
- Undermount sinks
- Chrome sink faucets and matching tub/shower controls
- Centrally ventilated to exterior
- One-piece 5' tub in main bathroom
- One-piece 5' shower w/door ensuite

LAUNDRY ROOM

- Standard drain and taps for washer- location as per plan
- Exterior dryer vent and dryer outlet- location as per plan

FLOORS

- Engineered floor (Web-joist) system
- 23/32" tongue and groove sub floor; glued and screwed down

FLOOR COVERING FEATURES

- Carpet with 7lb foam under pad – location as per plan
- Luxury vinyl plank flooring with solid core – location as per plan

INTERIOR FINISHING

- Painted white trim including all baseboards and casings
- 2-panel Masonite passage doors
- Black passage & privacy door levers
- Privacy lock to master bedroom and all bathrooms
- Black bath hardware
- Interior walls painted with primer coat and two finish coats in standard builder color
- Flat-latex painted ceiling throughout all living areas
- 9 foot (approximately) main floor ceiling height
- Wire shelving in closets

DRYWALL & INSULATION

- Demising walls are constructed of double stud wall with air space between, two layers of drywall sheathing each side and batt-type sound insulation (STC rating of 66)
- Exterior walls R20 insulation
- R50 loose fill attic insulation
- Caulking applied on top and bottom plates to minimize heat loss and air infiltration
- Electrical pans to minimize draft at electrical outlets through exterior walls
- Insulation stops at cantilevered trusses and minimum 12" heel height where required to accept R50 insulation

ELECTRICAL & MECHANICAL

- Decora light switches and plugs throughout
- Individual suite electrical metering
- Cable ready for BellMTS & Shaw. Telephone, internet & cable TV outlets, 1 in living room and 1 each bedroom
- Pre-wired for future alarm system
- Hard wired smoke and carbon monoxide detectors
- 220-volt service for stove & dryer
- 60-gallon electric hot water tank
- Shut off valves for all interior taps
- Exterior hose bib at the back of each unit with backyard.
- Gas furnace
- Programmable Thermostat
- Central exhaust system with automatic controls
- Heat Recovery Ventilation System
- Heat Recovery Coil for drain water
- Power vacuum all ducts prior to possession
- Designer LED lighting package (as per plan)

ROOF

- Engineered roof trusses, 24" o.c.
- 7/16 oriented strand board (OSB) sheathing with H clips for stability
- Architectural Laminated Shingles with 40-year limited warranty

FOUNDATION

- Steel reinforced concrete foundation walls supported by steel reinforced concrete piles

EXTERIOR FEATURES

- Cement board siding, brick veneer and stucco
- Pre-finished aluminum fascia, soffits, eavestrough and downspouts
- 20-year manufacturer's warranty against peeling and flaking on pre-finished aluminum
- Triple-pane PVC windows with manufacturer's extended warranty on seal and hardware
- Insulated garage door

WOOD FRAMING

- Exterior walls 2" x 6" wood stud framing
- 7/16" oriented strand board sheathing (OSB)
- Special attention to seal top and bottom plate to minimize heat loss
- All demising walls between living areas double 2x4 stud walls, sound batt insulation and double layer of type x 5/8" drywall both sides.
- Garage demising walls comprised of 2x4 studs, single layer of drywall both sides.

ROOF

- Engineered roof trusses, 24" o.c.
- 7/16 oriented strand board (OSB) sheathing with H clips for stability
- Architectural Laminated Shingles with 40-year limited warranty

SERVICES & UTILITIES

- Location of all underground electrical lines, surface transformers and other electrical equipment determined by Manitoba Hydro engineering department.
- Professionally designed land drainage and site services plan

SITE GRADING & LANDSCAPING

- Yard, common green space areas to be rough graded as weather permits according to grades set by the Engineer
- Landscaping and common area development as per construction schedule and as weather permits

SERVICE & HOME

- 1-2-5-10 New Home Warranty
- Developer Representative available for support after occupancy
- Pet-friendly Development

Couture

S O U T H



SALES TEAM

RHONDA FUNKE | REALTOR®

QUALICO REALTY SERVICES (MANITOBA) LTD

204.230.9484

COUTURE SOUTH@QUALICO.COM

SHANNON GOODWIN | REALTOR®

QUALICO REALTY SERVICES (MANITOBA) LTD

204.979.7355

COUTURESOUTH@QUALICO.COM

LEARN MORE AT [COUTURESOUTH.CA](https://couturesouth.ca)