

THE CURRANT

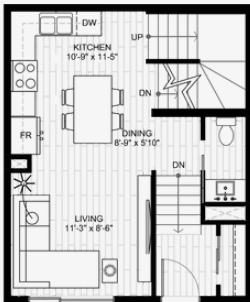
388 PIPELINE RD
STARTING AT \$324,900 INC.GST

Amber
Grove
CONDOMINIUMS

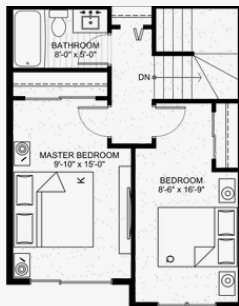


FEATURES

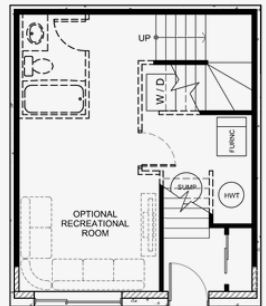
- 979 SQFT, Two-Storey, 2 Bedroom, 1.5 bathroom Townhome With Option to Develop Lower Level
- 2 Exterior Parking Stalls
- Quartz counter tops in kitchen, KitchenCraft cabinets & luxury vinyl plank flooring
- Includes 4-piece Stainless Steel Appliance Package, Air Conditioning and Washer/Dryer
- 5 Available Units



MAIN FLOOR



SECOND FLOOR



OPTIONAL LOWER LEVEL

ANITA SHARMA TURNER

RE/MAX Associates

204-989-9000

anita@anitasharmaturner.com

StreetSide

A QUALICO Company