

THE ASPEN+

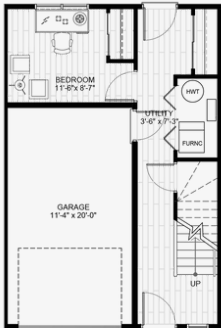
388 PIPELINE RD
STARTING AT \$419,900 INC. GST

Amber
Grove
CONDOMINIUMS

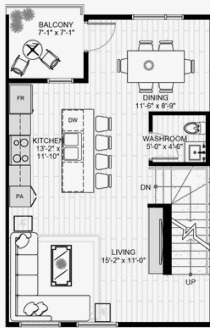


FEATURES

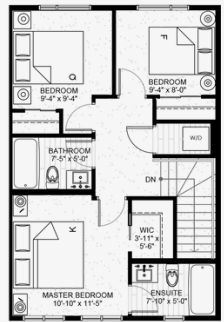
- 1,457 SQFT, Three-Storey, 4 Bedrooms, 2.5 Baths Townhome
- Attached Single Car Garage and Private Balcony
- Open Concept Kitchen & Living Area with Designer Lighting Package
- Includes 4-piece Stainless Steel Appliance Package, Air Conditioning and Washer/Dryer
- KitchenCraft cabinets & luxury vinyl plank flooring
- 11 Available Units



MAIN FLOOR



SECOND FLOOR



THIRD FLOOR

ANITA SHARMA TURNER

RE/MAX Associates
204-989-9000

anita@anitasharmaturner.com

StreetSide

A QUALICO Company